

# SZ-100-M

## Warranty

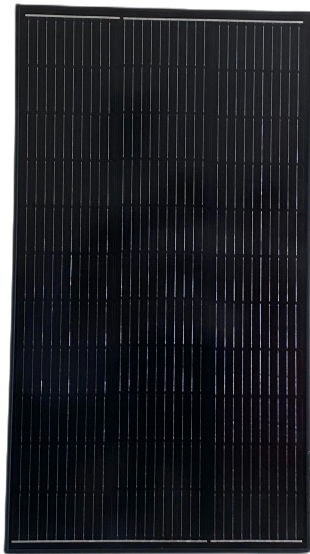
- ◆ 5 years Manufacturer Warranty
- ◆ Warranty on Electrical Performance : 8 years power output

## Manufacturing

- ◆ Original cell sorting system ensures the best of cells' electric match
- ◆ EL-Testing before packing
- ◆ Comprehensive module power testing, 100% positive output tolerance guaranteed

## Performance

- ◆ High module conversion efficiency
- ◆ High-quality cells and partial-cell design lower series resistance and reduce power degradation
- ◆ Optimized performance under low light conditions and with the integrated bypass-diodes, the panel can still work when partially shaded
- ◆ IP67 rated junction box, reliable cables and standard MC4 connectors improves the stability



## Mechanical Data

Standard Test Conditions AM=1.5, E=1000W/m<sup>2</sup>, TC=25°C

Nominal Power	100W
Cell Type	Monocrystalline
Cell Efficiency	22%
Maximum Power Current (Impp)	5.39A
Maximum Power Voltage (Vmpp)	18.56V
Open-circuit Voltage (Voc)	21.76V
Short-circuit Current (Isc)	5.72A
Maximum System Voltage	500V
Output Tolerance	0~+3%
Cable	700mm / 2.5mm <sup>2</sup>
Connector Type	MC4 / MC4 Compatible
Module Structure	Aluminum Frame / Glass / EVA / Backsheet
Junction box rating	≥IP67
Diode	
Working Temperature	-40°C~+80°C

## Packaging

Module Dimensions	1190*450*30mm
Module Weight	5.7kg
Package	Pallet
Pieces per Pallet	60
Gross Weight per Pallet	215kg
Pallet Dimensions	1.2*1.1*1.1M

**SOLMAX NEW ENERGY B.V.**

Address: Defensiedok 18,3433 KL, Nieuwegein, The Netherlands

Tel: +31-307 855 708

E-mail: info25@solarfam.nl

