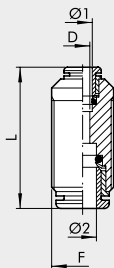


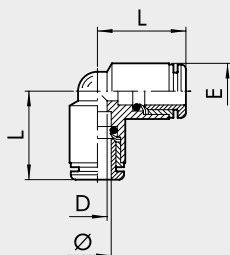
G
BSP

STRAIGHT, INTERMEDIATE (R3)



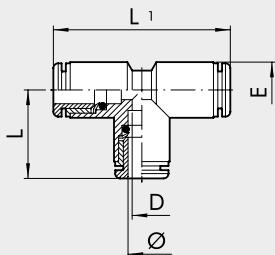
Code	Ref.	Ø 1	Ø 2	F	L	D
2003A02	R3	3	3	M8x0.75	18.4	2
2003A01	R3	3.17	3.17	M8x0.75	18.4	2
2103001	RL3	4	4	M11x1	30.6	2.5
2003002	R3	5	5	M14x1	33.5	4
2103003	RL3	6	6	M13x1	33	4.5
2103004	RL3	8	8	M15x1	35.7	6.5
2103005	RL3	10	10	M17x1	39.2	8
2003006	RL3	12	12	M20x1	40.7	10
2003007	RL3	14	14	M24x1	45.9	12
2103301	RL3	4	6	M13x1	32.7	2.5
2103302	RL3	4	8	M15x1	34.4	2.5
2103303	RL3	6	8	M15x1	35	4.5
2103304	RL3	6	10	M17x1	37.5	4.5
2103306	RL3	6	12	M20x1	39	4.5
2103305	RL3	8	10	M17x1	37.8	6.5
2103307	RL3	8	12	M20x1	40.1	6
2103308	RL3	10	12	M20x1	40.8	8

ELBOW, INTERMEDIATE (R4)



Code	Ref.	Ø	L	D	E
2004A02	R4	3	10.4	2	6.3
2004A01	R4	3.17	10.4	2	6.3
2104001	RL4	4	16.7	2.5	9.5
2004002	R4	5	19.2	3	13.5
2104003	RL4	6	19	4.5	11.5
2104004	RL4	8	21.3	6.5	13.5
2104005	RL4	10	23.3	8	16
2004006	RL4	12	26	10	20.5
2004007	RL4	14	29.3	12	22

TEE, INTERMEDIATE (R5)



Code	Ref.	Ø	L	L1	D	E
2005A02	R5	3	10.4	20.8	2	6.3
2005A01	R5	3.17	10.4	20.8	2	6.3
2105001	RL5	4	16.7	33.4	2.5	9.5
2005002	R5	5	19.2	38.4	3	13.5
2105003	RL5	6	19	38	4.5	11.5
2105004	RL5	8	21.3	42.6	6.5	13.5
2105005	RL5	10	23.3	46.6	8	16
2005006	RL5	12	26	52	10	20.5
2005007	RL5	14	29.3	58.6	12	22